

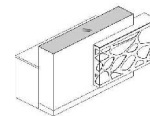
SPECYFIKACJA TECHNICZNA

KOLORYSTYKA

BLAT GÓRNY - SZKŁO



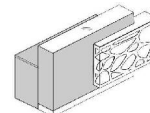
BIAŁY, LACOBEL



KORPUS



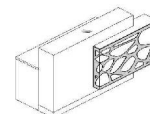
67 BIAŁY PASTEL



FRONT - METAL



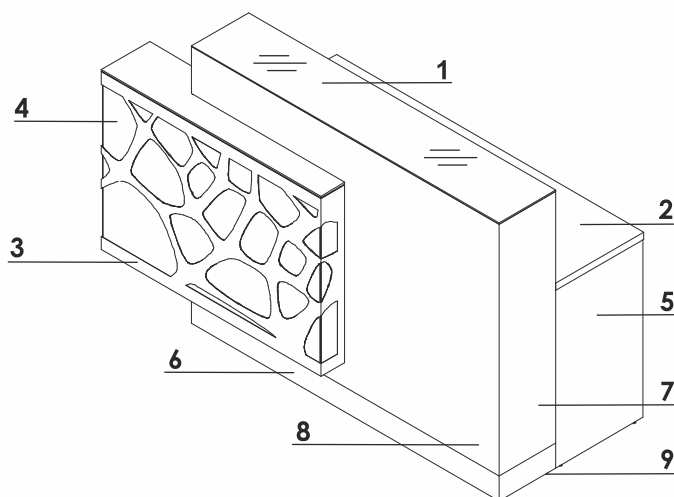
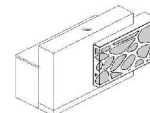
15 BIAŁY POŁYSK



FRONT - PLEKSIGLAS

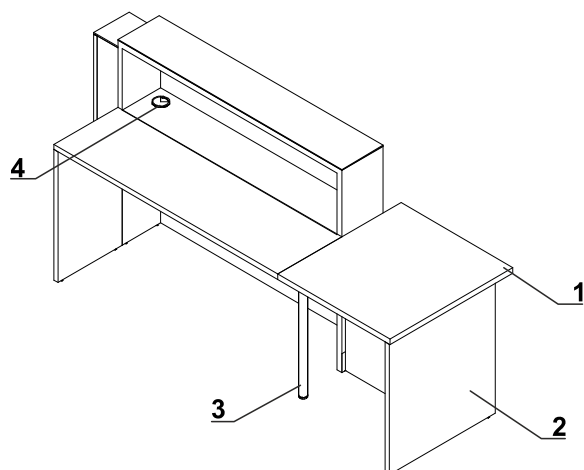


PLEKSIGLAS BIAŁY



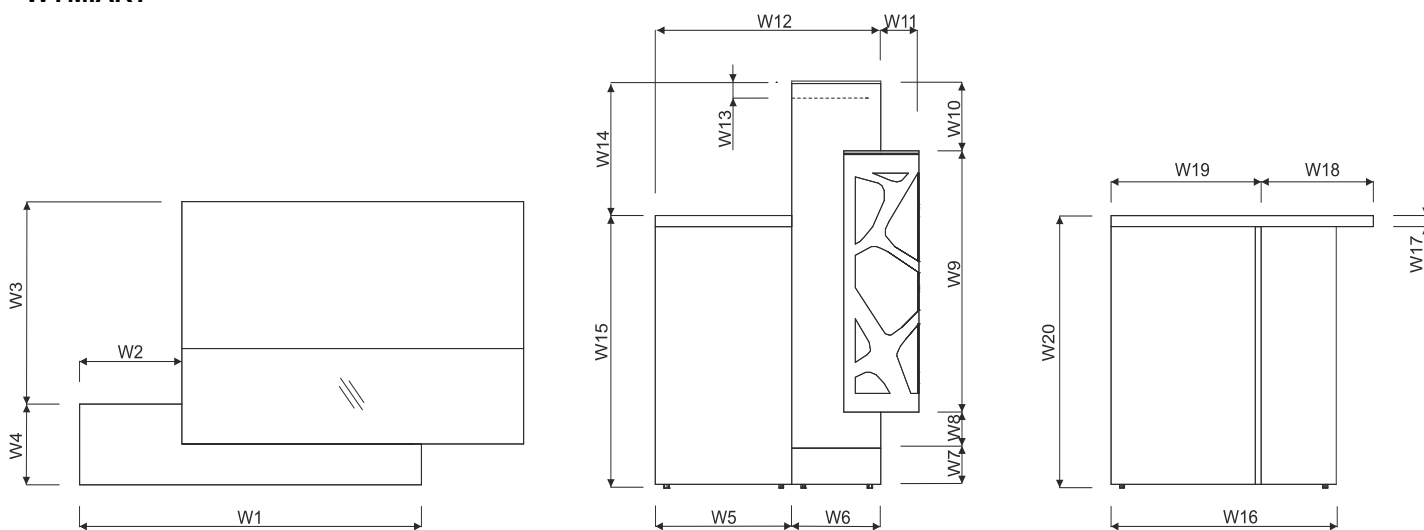
1. **Blat Szklany** - szkło LACOBEL 4mm
2. **Blat roboczy** - płyta melaminowana 28mm, obrzeża PVC
3. **Front z oświetleniem** - połączenie elementu metalowego, malowanego proszkowo z plexiglas
4. **Oświetlenie** - RGBW LED, sterowane zdalnie
5. **Noga boczna niska** - płyta melaminowana 28mm, obrzeża PVC
6. **Cokół** - HPL - aluminium szczotkowane
7. **Korpus** - płyta 18mm pokryta HPL - połysk
8. **Front** - płyta melaminowana 28mm, pokryta HPL - połysk 0,8mm
9. **Regulator poziomu** - regulacja w zakresie 5mm

SPECYFIKACJA TECHNICZNA



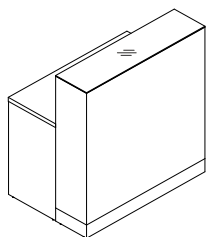
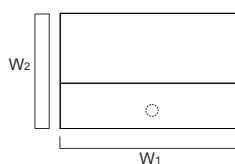
1. **Blat roboczy** - płyta melaminowana 28mm, obrzeża PVC
2. **Noga boczna niska** - płyta melaminowana 28mm, obrzeża PVC
3. **Noga podpierająca NE41** - metalowa, wymagana na łączeniu blatów
4. **Przepusty kablowe** - Ø80mm

WYMIARY

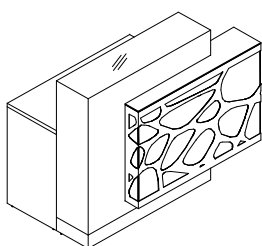


W1 - 1000mm | W2 - 300mm | W3 - 550mm | W4 - 222mm | W5 - 400mm | W6 - 260mm | W7 - 100mm | W8 - 97mm | W9 - 705mm | W10 - 184mm | W11 - 110mm | W12 - 660mm | W13 - 34mm | W14 - 365mm | W15 - 740mm | W16 - 660mm | W17 - 28mm | W18 - 318mm | W19 - 452mm | W20 - 740mm

UKŁADY ŁAD

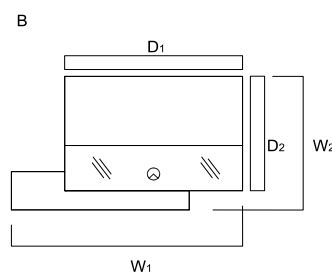
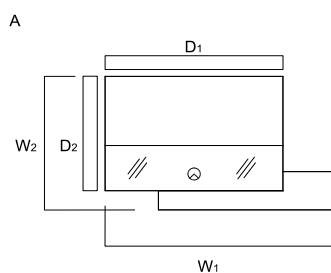
LOG10¹⁰K+LOG14¹⁰B

SYMBOL	WYMIARY [mm]										UWAGI
	W ₁	W ₂	D ₁	D ₂	H		kg	m ³	szt		
LOG10G	1000	660	-	-	1105		50.0	0.582	2		
LOG14G	1400	660	-	-	1105		55.0	0.815	2		

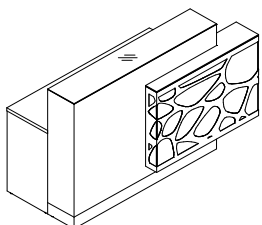


A: LOG10K+LOG10B+LOG01L

B: LOG10K+LOG10B+LOG01P

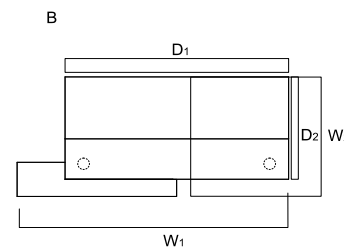
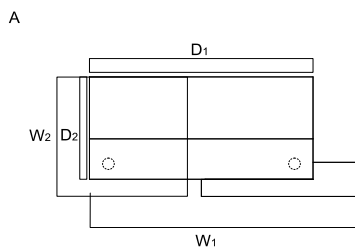


SYMBOL		WYMIARY [mm]										UWAGI
A	B	W ₁	W ₂	D ₁	D ₂	H		kg	m ³	szt		
LOG11LG	LOG11PG	1300	770	1000	660	1105		76.5	0.745	6		



A: LOG14K+LOG14B+LOG01L

B: LOG14K+LOG14B+LOG01P



SYMBOL		WYMIARY [mm]										UWAGI
A	B	W ₁	W ₂	D ₁	D ₂	H		kg	m ³	szt		
LOG12LG	LOG12PG	1700	770	1400	660	1105		81.5	0.978	6		

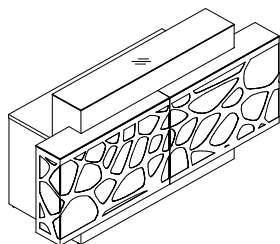
LEGENDA:

- WAGA NETTO

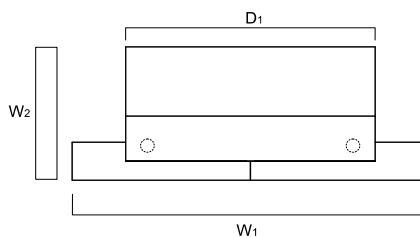
- OBJĘTOŚĆ

- ILOŚĆ PACZEK

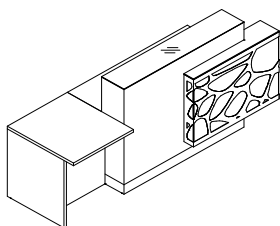
UKŁADY LAD



LOG14K+LOG14B+LOG01L+LOG01P

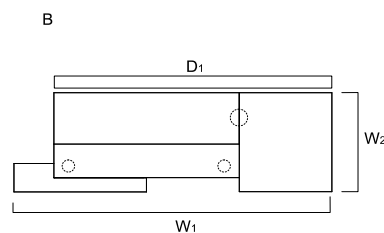
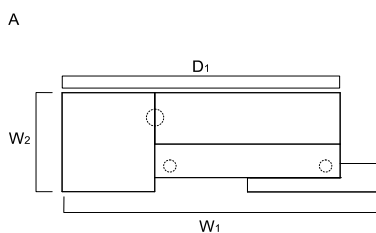


SYMBOL	WYMIARY [mm]										UWAGI
	W ₁	W ₂	D ₁	D ₂	H		kg	m ³	szt		
LOG13G	2000	770	1400	-	1105		108.0	1.141	10		

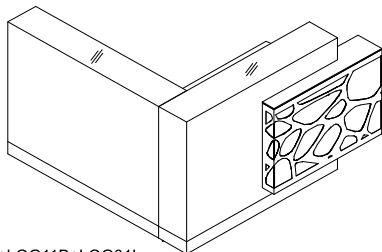


A: LOG07+NE41+LOG14K+LOG14B+LOG01L

B: LOG01P+LOG14K+LOG14B+NE41+LOG07

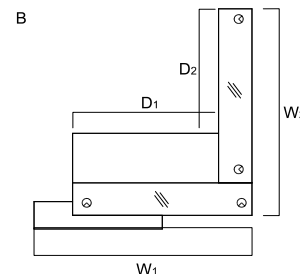
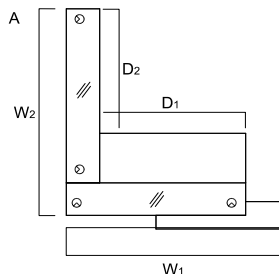


SYMBOL		WYMIARY [mm]										UWAGI
A	B	W ₁	W ₂	D ₁	D ₂	H		kg	m ³	szt		
LOG14PLG	LOG14PPG	2400	770	2100	-	1105		94.8	1.027	8		



A: 2xLOG14K+LOG11B+LOG01L

B: LOG01P+2xLOG14K+LOG11B



SYMBOL		WYMIARY [mm]										UWAGI
A	B	W ₁	W ₂	D ₁	D ₂	H		kg	m ³	szt		
LOG16LG	LOG16PG	1700	1660	1140	1000	1105		121.5	1.301	7		

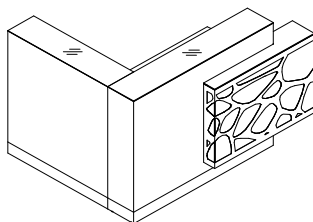
LEGENDA:

- WAGA NETTO

- OBJĘTOŚĆ

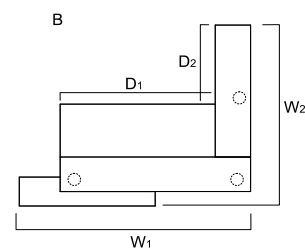
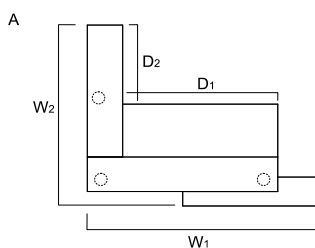
- ILOŚĆ PACZEK

UKŁADY LAD

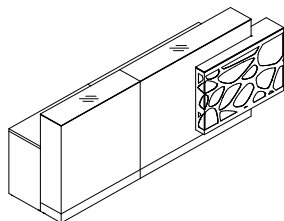


A: LOG10K+LOG14K+LOG11B+LOG01L

B: LOG01P+LOG10K+LOG14K+LOG11B

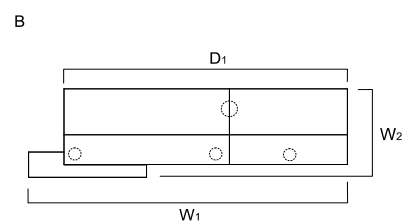
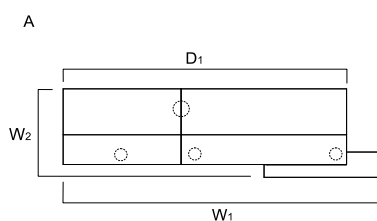


SYMBOL		WYMIARY [mm]										UWAGI
A	B	W ₁	W ₂	D ₁	D ₂	H						
LOG18LG	LOG18PG	1700	1370	1140	600	1105		116.5	1.187	7		

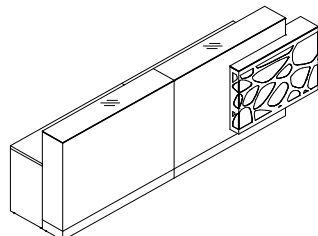


A: LOG10K+NE41+LOG14K+LOG10B+LOG14B+LOG01L

B: LOG01P+LOG14K+NE41+LOG10K+LOG14B+LOG10B

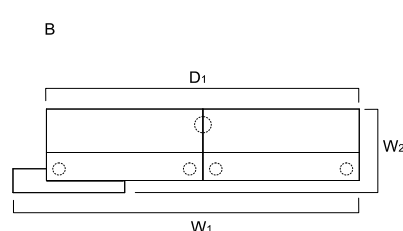
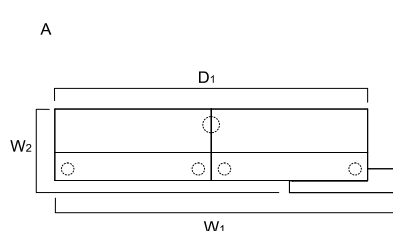


SYMBOL		WYMIARY [mm]										UWAGI
A	B	W ₁	W ₂	D ₁	D ₂	H						
LOG19LG	LOG19PG	2700	770	2400	-	1105		132.8	1.577	9		



A: 2xLOG14K+NE41+2xLOG14B+LOG01L

B: LOG01P+2xLOG14K+NE41+2xLOG14B



SYMBOL		WYMIARY [mm]										UWAGI
A	B	W ₁	W ₂	D ₁	D ₂	H						
LOG20LG	LOG20PG	3100	770	2800	-	1105		137.8	1.809	9		

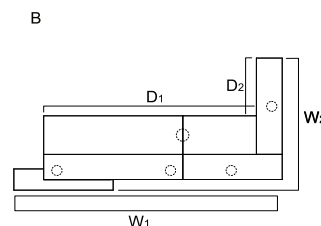
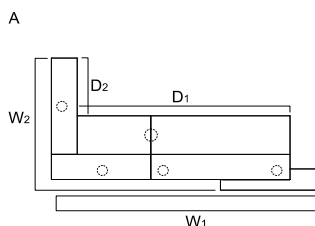
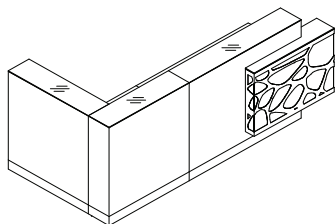
LEGENDA:

- WAGA NETTO

- OBJĘTOŚĆ

- ILOŚĆ PACZEK

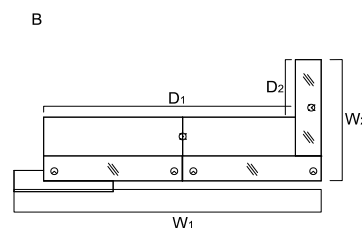
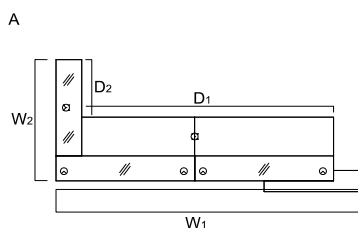
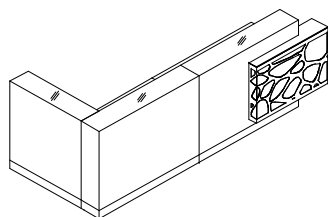
UKŁADY LAD



A: 2xLOG10K+LOG14K+LOG14B+NE41+LOG01L+LOG08B

B: LOG01P+LOG14K+NE41+LOG14B+2xLOG10K+LOG08B

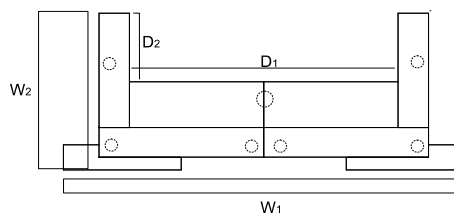
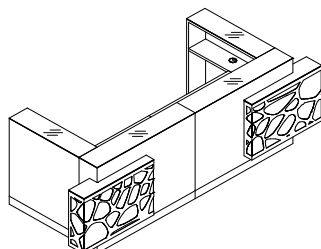
SYMBOL		WYMIARY [mm]										UWAGI
A	B	W ₁	W ₂	D ₁	D ₂	H		kg	m ³	szt		
LOG21LG	LOG21PG	2700	1370	2140	600	1105		163.8	1.575	10		



A: LOG10K+2xLOG14K+LOG11B+LOG14B+NE41+LOG01L

B: LOG01P+2xLOG14K+NE41+LOG14B+LOG11B+LOG10K

SYMBOL		WYMIARY [mm]										UWAGI
A	B	W ₁	W ₂	D ₁	D ₂	H		kg	m ³	szt		
LOG22LG	LOG22PG	3100	1370	2540	600	1105		172.8	2.018	10		



2xLOG10K+2xLOG14K+2xLOG11B+NE41+LOG01L+LOG01P

SYMBOL		WYMIARY [mm]										UWAGI
		W ₁	W ₂	D ₁	D ₂	H		kg	m ³	szt		
LOG23G		3400	1370	2280	600	1105		234.3	2.390	15		

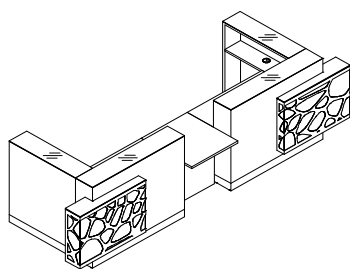
LEGENDA:

- WAGA NETTO

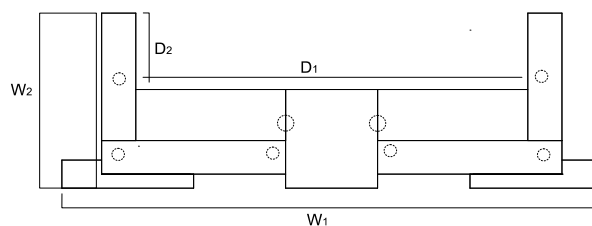
- OBJĘTOŚĆ

- ILOŚĆ PACZEK

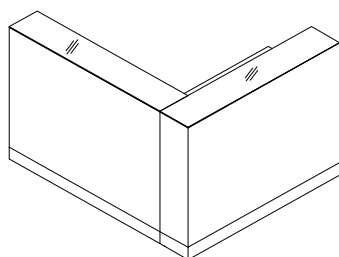
UKŁADY LAD



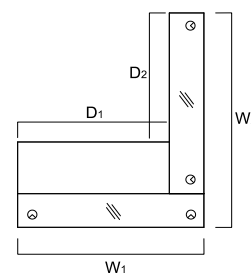
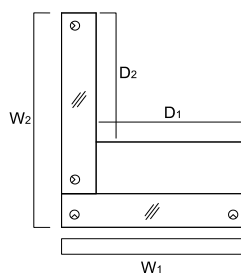
2xLOG10K+2xLOG14K+2xLOG11B+2xNE41+LOG07+LOG01L+LOG01P



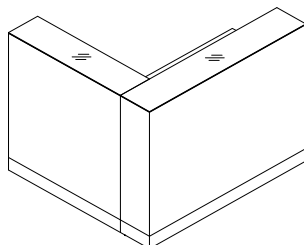
SYMBOL	WYMIARY [mm]										UWAGI
	W ₁	W ₂	D ₁	D ₂	H		kg	m ³	szt		
LOG24G	4100	1370	-	-	1105		247.6	2.440	17		



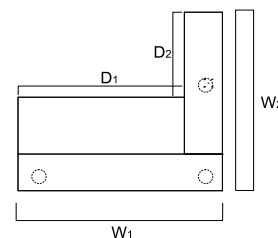
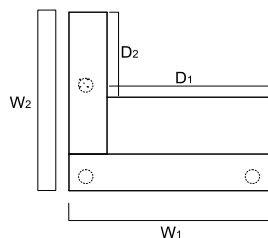
2xLOG14K+LOG11B



SYMBOL	WYMIARY [mm]										UWAGI
	W ₁	W ₂	D ₁	D ₂	H		kg	m ³	szt		
LOG15	1400	1660	-	-	1105		95.0	1.138	3		



LOG10K+LOG14K+LOG11B



SYMBOL	WYMIARY [mm]										UWAGI
	W ₁	W ₂	D ₁	D ₂	H		kg	m ³	szt		
LOG17	1400	1260	-	-	1105		90.0	1.024	3		

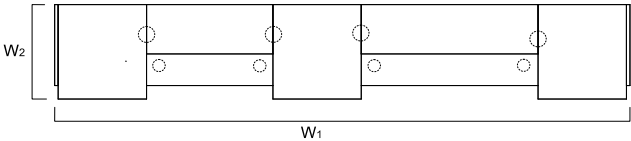
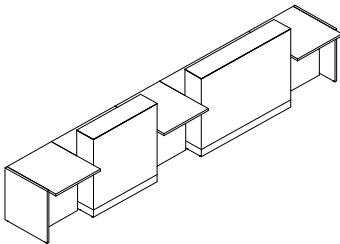
LEGENDA:

- WAGA NETTO




- OBJĘTOŚĆ

- ILOŚĆ PACZEK

UKŁADY LAD




3xLOG07+LOG14K+LOG14B+LOG10K+LOG10B+4xNE41




SYMBOL	WYMIARY									UWAGI
	W ₁	W ₂	D ₁	D ₂	H		kg	m ³	szt	
LOG25	4556	770	-	-	1105		146.2	1.561	11	

LEGENDA:

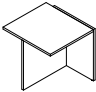
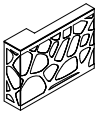
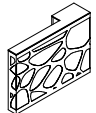
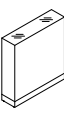
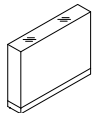
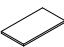
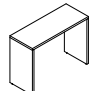
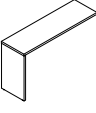
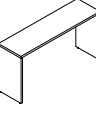

 - WAGA NETTO

 - OBJĘTOŚĆ



 - ILOŚĆ PACZEK

WIDOK I RZUT OBIEKTU	WYMIARY [mm]			SYMBOL						UWAGI
	SZEROKOŚĆ	GLEBOKOŚĆ	WYSOKOŚĆ			kg	m3	szt		

ELEMENTY SKŁADOWE

	728	770	740	LOG07		13.3	0.049	2		element uniwersalny
	1000	220	710	LOG01P		26.5	0.163	4		prawa
	1000	220	710	LOG01L		26.5	0.163	4		lewa
	1000	260	1105	LOG10K		35.0	0.286	1		
	1400	260	1105	LOG14K		40.0	0.400	1		
	740	400	28	LOG08B		11.0	0.008	1		
	1000	400	740	LOG10B		15.0	0.296	1		
	1140	400	740	LOG11B		15.0	0.337	1		
	1400	400	740	LOG14B		15.0	0.414	1		
	40	40	712	NE41		1.5	0.017	1		noga okrągła, 15- biały połysk

LEGENDA:

 - WAGA NETTO - OBJĘTOŚĆ - ILOŚĆ PACZEK